

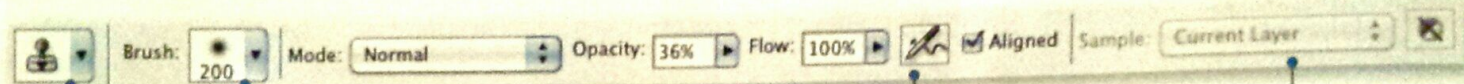


# Clone Stamp Tool

Find out the hidden secrets of the Clone Stamp Tool that will make replacing pixels that much easier

The Clone Stamp Tool is one of the most powerful retouching tools in Photoshop's arsenal. And while it can get rid of distracting elements in a photograph, it can also add parts to an image to make it more interesting. The Clone Stamp Tool works by sampling pixels from a source layer and applying them to a target layer (the target layer can be the same layer or a different layer). To make a source

sample, click **Alt** and click on the area you want to replace. It's a powerful tool that, rather than masking the area like other retouching tools, copies and replaces pixels. Before you start any retouching, create a new layer (**Layer>New**) and select **Sample: All Layers** in the top toolbar. By cloning to a new layer, you protect the original image pixels so you can reverse any changes you make.

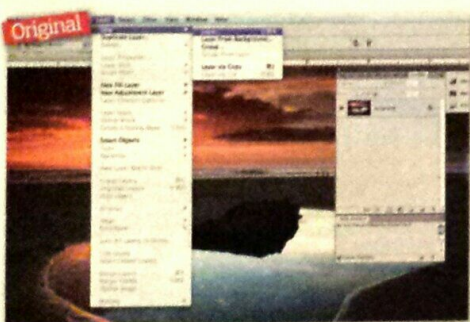


**Tool preset picker:** Click the arrow to show a list of preloaded Clone Tool presets.

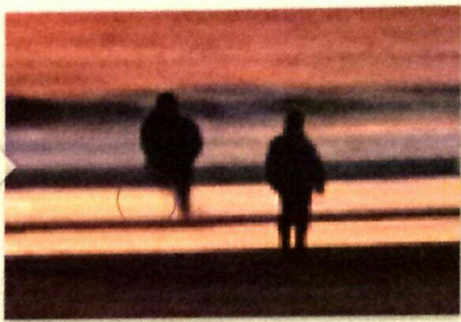
**Brush preset picker:** Here you can select brush presets and control its size and hardness.

**Adjustments:** Alter the way the cloning sample interacts with the target layer.

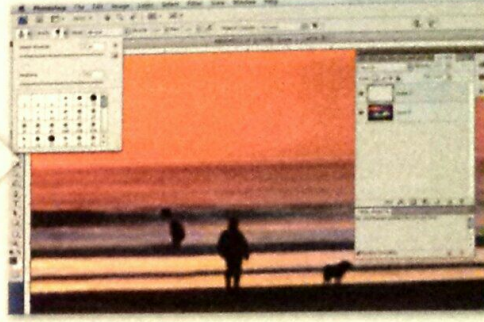
**Clone sample mode:** Select what layer is used to take your cloning sample from.



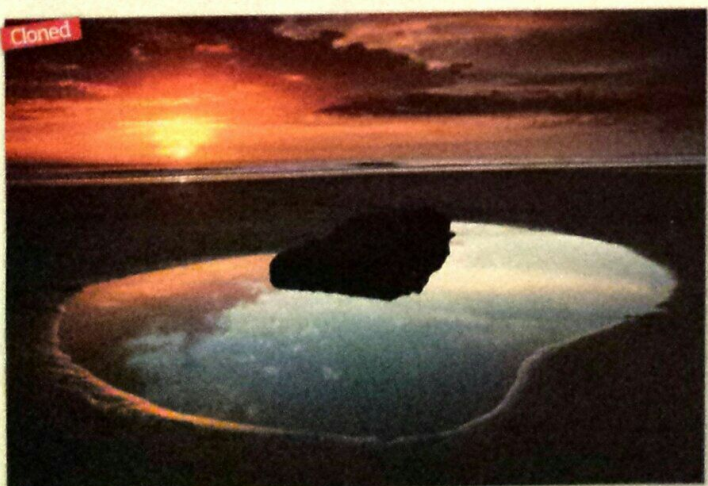
**1** Create a new layer (**Layer>New**) and select the **Clone Stamp Tool** and **All Layers** from the **Sample** menu in the Options toolbar. Zoom into the area to clone out and set the **Opacity** to 100%.



**2** Take a source sample of pixels from near the target area by holding **Alt** and brush over the target area using small stroking motions to avoid leaving signs of clicking the mouse.



**3** The edges of cloning can look quite harsh, so reduce the brush's **Hardness** to 20%, leaving the **Opacity** at 100%. Also try adjusting the **Flow** for more subtle control over the cloning.



**4** Cloning in a different area can create a repeat pattern if the sample is too close to the target. If this happens, undo your changes and then clone from an area further away from the target but on the same plane of focus.

**HOTKEY**

**Brackets**

Brushes are accessed via the top toolbar or via **Window>Brushes**. While you're working on an image, if you need to alter the size of your brush, press the right or the left brackets (next to the letter P).

## Secrets unlocked

### ✓ WORKFLOW ASSISTANCE

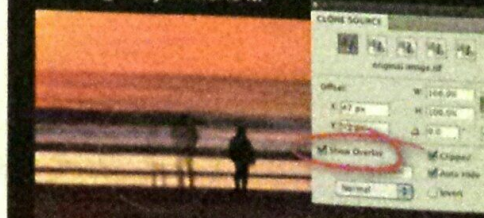
#### 1) Create a 'shadow' window

Click **Window>Arrange>New Window for [filename]** to create a shadow image. Now you can zoom into the working image and have the shadow image open to see the overall effect, saving you from zooming in and out.



#### 2) Create a preview overlay

Activate the **Show Overlay** and the **Clipped** checkbox in the Clone Source panel (**Window>Clone Source** or **Shift+Alt**) to see an overlay of the image as you clone it.



### ✓ CLONETIP: CLONE FROM ANOTHER IMAGE

#### USE: ADD ELEMENTS TO AN IMAGE

Open the source image and the target image in Photoshop and then align the documents side by side, by dragging one off the other. Now select the **Clone Stamp Tool** and tick the **Aligned** box in the top toolbar. Select a soft brush and take a selection from the sample picture, in this case the clouds, and then paint the source where you want it on the target image. You may find adjusting the **Opacity** helps improve the results.

